

SURFBOARDS®



THE BREADBOARDING MEDIUM FOR SURFACE MOUNT™

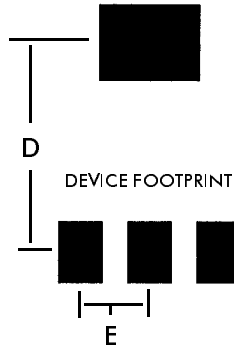
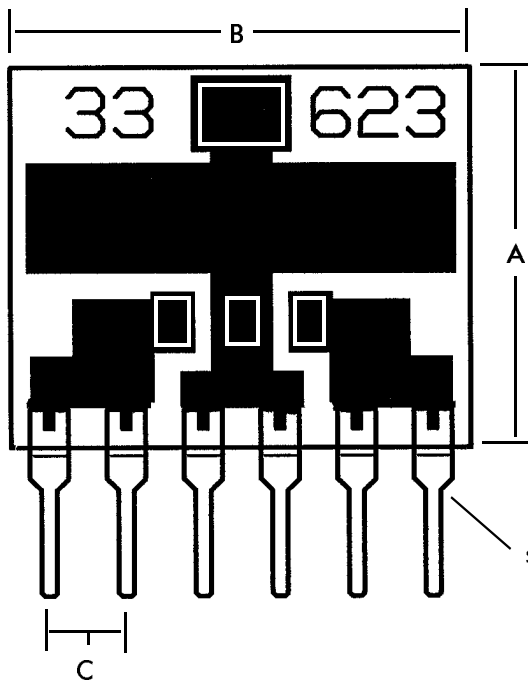
APPLICATION SPECIFIC ADAPTERS

IDS33623 3-9-99

MODEL **33623**

FOR **SOT-223**
HIGHER CURRENT APPLICATIONS

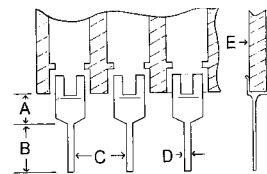
SAME DEVICE FOOTPRINT AS MODEL 33223 EXCEPT WITH 2 OUTPUT PINS PER DEVICE LEAD FOR HIGHER CURRENT.



NOTE: CIRCUIT TRACE FOILS AND OUTPUT PINS MAY NOT BE SUITABLE FOR DEVICE OPERATION AT HIGHEST RATED CURRENT LEVELS. EXTREME TEMPERATURE RISE MAY RESULT IN FAILURE.

SINGLE-IN-LINE (SIP) PINS ON .1 in. CENTERS. 2 PINS PER DEVICE LEAD. SEE PIN SPECS.

PIN SPECIFICATIONS / TOLERANCES



In Inches
 A = .062 ± .006
 B = .130 ± .010
 C = .100 ± .005
 D = .020 ± .004
 E = .031 ± .005

FIG.	INCHES	MM
A	.500	12.70
B	.600	15.24
C	.100	2.54
D	.275	6.98
E	.090	2.28

BOARD SPECIFICATIONS

BOARD MATERIAL: .031 ± .005 in. Thick G-10 FR-4 Glass Epoxy or equivalent.

CIRCUITS: 1oz Copper with solder coated pads.

TOLERANCES: Given in inches
 Board Size ± .020 / OAL ± .040
 Circuit pattern/position ± .005

Copyright 1997, 1999 by Capital Advanced Technologies, Inc. All rights reserved. Surfboards are a registered trademark of Capital Advanced technologies, Inc. All other trademarks or registered trademarks are property of their respective owners. Availability, specifications, and prices are subject to change without notice. All information given is believed to be accurate but is not guaranteed. The user of information given or products represented by such information is responsible for determining the suitability of said information or products for a given purpose.

CAPITAL ADVANCED TECHNOLOGIES, INC.

CAROL STREAM, ILLINOIS, USA.

PHONE 630-690-1696 WWW.CapitalAdvanced.Com FAX-ON-DEMAND 630-690-2865